



National Environmental Science Program

Data delivery supporting offshore renewable energy developments

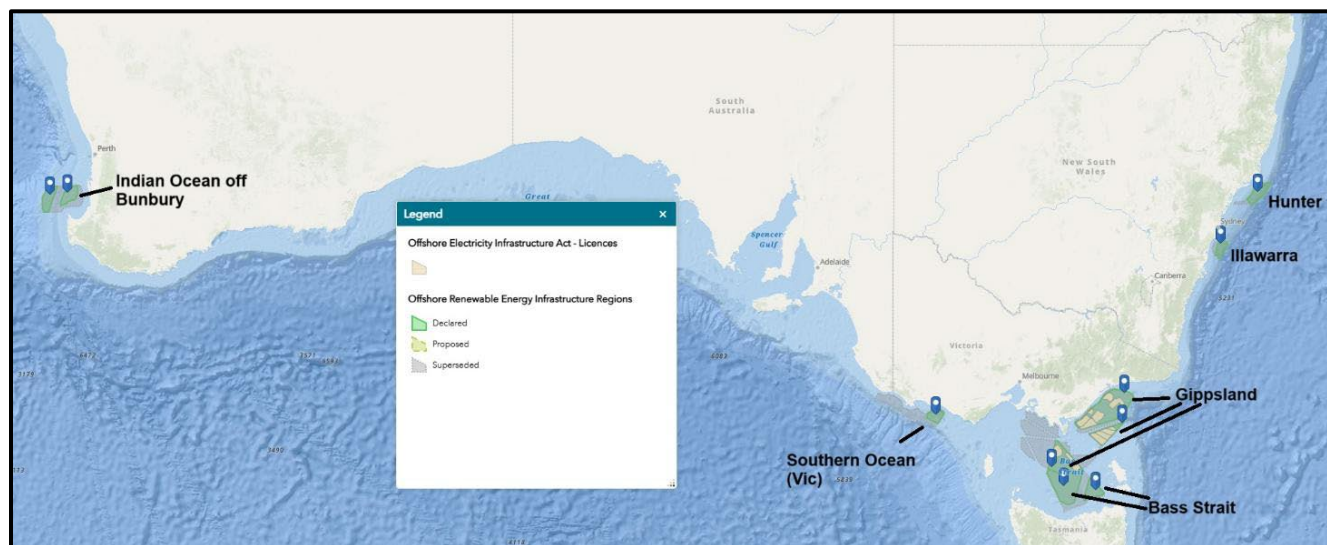
Alan Jordan – Marine and Coastal Hub



Project 3.3: Guiding research and best practice standards for the sustainable development of offshore renewables and other emerging marine industries in Australia

The project includes an **inventory of existing information** sources and expertise with respect to the following thematic areas:

1. Seabed geomorphology and habitat characteristics
2. Interactions with oceanography
3. Interacting species and habitats
4. Potential impacts of installation, operation, and decommissioning
5. Monitoring needs and associated best practice
6. Indigenous communities and ORE development areas



Offshore Renewables Research Investments

DCCEEW
investment

Renewable Energy Research Initiative

- Investment in key environmental knowledge gaps

Environment Information Australia

- ORE data management

Vict Gov't funded research

- Seabed surveys, bathymetry, fauna
- Bird surveys
- Cetacean surveys

Industry funded research

- Seabed surveys, bathymetry, sediments, fauna
- Bird aerial surveys
- Benthic fish surveys
- Cetacean surveys

Marine and Coastal Hub project investments

Hub project 3.3
East Gippsland / Bass Strait, Hunter, Illawarra, Southern Ocean, Bunbury

Hub project 3.21
East Gippsland Emerging Priority

Hub Project 3.15
Informing Southern Right Whale management across southern Australia

Hub project 4.7
Offshore renewable energy Gippsland region risk assessment

Hub project 4.8
Risk modelling of cetacean interactions

Hub project 4.9
Assessment of pygmy blue whales

Hub project 5.6
Distribution and abundance of white sharks

WAMSI investment

Offshore wind research
-synthesis of marine environmental data

Blue Economy CRC projects

Marine futures project
-synthesis of marine use data

Geoscience Australia

Offshore wind research
-bathymetry, backscatter, geomorphic mapping

ACOWE

**Marine environmental
research**

Offshore Renewables Research Investments

Potential DCCEEW investment

Renewable Energy Research Initiative

- Investment in key environmental knowledge gaps

Environment Information Australia

- ORE data management

Vict Gov't funded research

- Seabed surveys, bathymetry, fauna
- Bird surveys
- Cetacean surveys

Industry funded research

- Seabed surveys, bathymetry, sediments, fauna
- Bird aerial surveys
- Benthic fish surveys
- Cetacean surveys

Relevant primary environmental data portals

AMSIS

AODN

Ausseabed

SeaMap
Australia

Australian Right Whale
Photo-Id Catalogue

GlobalArchive

UMI/Squidle+

Atlas of Living
Australia

Protected Matters
Search Tool

Species Profile and
Threats Database (SPRAT)

National Conservation
Values Atlas

Cetaceans sightings
application

Marine and Coastal Hub project investments

Hub project 3.3
East Gippsland / Bass Strait, Hunter, Illawarra, Southern Ocean, Bunbury

Hub project 3.21
East Gippsland Emerging Priority

Hub Project 3.15
Informing Southern Right Whale management across southern Australia

Hub project 4.7
Offshore renewable energy Gippsland region risk assessment

Hub project 4.8
Risk modelling of cetacean interactions

Hub project 4.9
Assessment of pygmy blue whales

Hub project 5.6
Distribution and abundance of white sharks

WAMSI investment

Offshore wind research
-synthesis of marine environmental data

Blue Economy CRC projects

Marine futures project
-synthesis of marine use data

Geoscience Australia

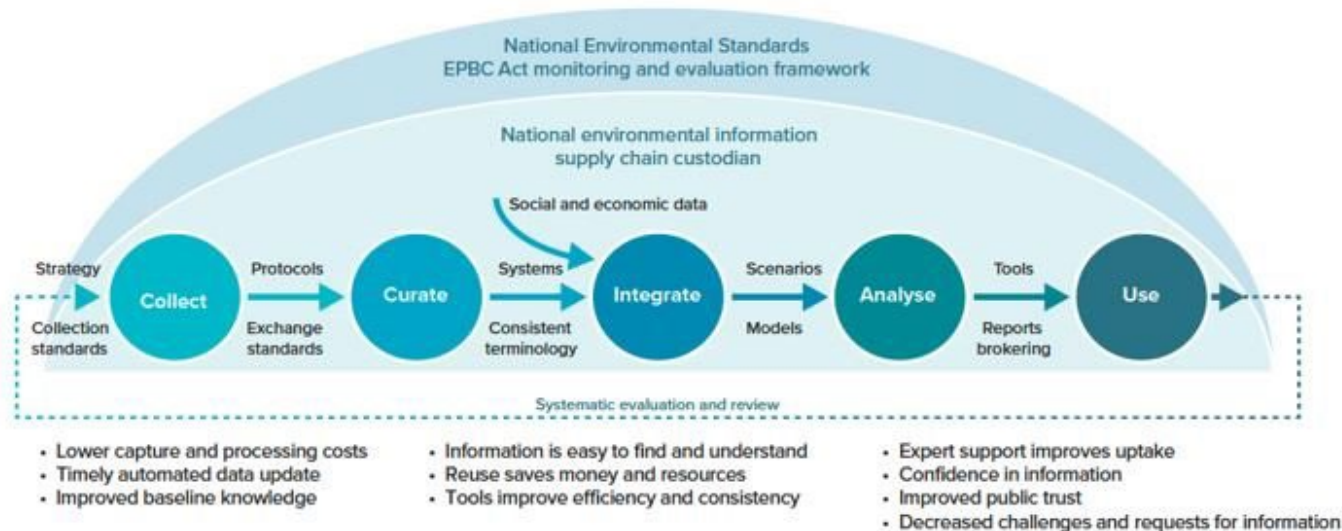
Offshore wind research
-bathymetry, backscatter, geomorphic mapping

ACOWE

Marine environmental research

Offshore Renewables Data

Australian Research Data Commons (ARDC) Offshore Renewable Energy Trusted Environmental Data and Information Supply Chains



Relevant primary environmental data portals

AMSIS

AODN

Ausseabed

SeaMap
Australia

Australian Right Whale
Photo-Id Catalogue

GlobalArchive

UMI/Squidle+

Atlas of Living
Australia

Protected Matters
Search Tool

Species Profile and
Threats Database (SPRAT)

National Conservation
Values Atlas

Cetaceans sightings
application

Potential DCCEEW
investment

Renewable Energy Research Initiative

- Investment in key environmental knowledge gaps

Environment Information Australia

- ORE data management

Vict Gov't funded research

- Seabed surveys, bathymetry, fauna
- Bird surveys
- Cetacean surveys

Industry funded research

- Seabed surveys, bathymetry, sediments, fauna
- Bird aerial surveys
- Benthic fish surveys
- Cetacean surveys

Marine and Coastal Hub project investments

Hub project 3.3

East Gippsland / Bass Strait, Hunter, Illawarra, Southern Ocean, Bunbury

Hub project 3.21

East Gippsland Emerging Priority

Hub Project 3.15

Informing Southern Right Whale management across southern Australia

Hub project 4.7

Offshore renewable energy Gippsland region risk assessment

Hub project 4.8

Risk modelling of cetacean interactions

Hub project 4.9

Assessment of pygmy blue whales

Hub project 5.6

Distribution and abundance of white sharks

WAMSI
investment

Offshore wind research

-synthesis of marine environmental data

Blue Economy
CRC projects

Marine futures project

-synthesis of marine use data

Geoscience
Australia

Offshore wind research

-bathymetry, backscatter, geomorphic mapping

ACOWE

Marine environmental
research

MaC Hub Offshore Renewables Research Coordination

- Consistent with offshore renewables research governance structures in the US and UK

Thematic Working Groups

**Seabirds and
shorebirds**

**Marine
mammals**

**Protected sharks
and fish**

**Habitats and
ecosystems**

Cross-cutting Working Groups

**Data management
and governance**

**Monitoring
standards and best
practice**

RWSC

Regional Wildlife Science Collaborative
for Offshore Wind





National Environmental Science Program

Data delivery supporting offshore renewable energy developments

- Thank you
- Q and A

