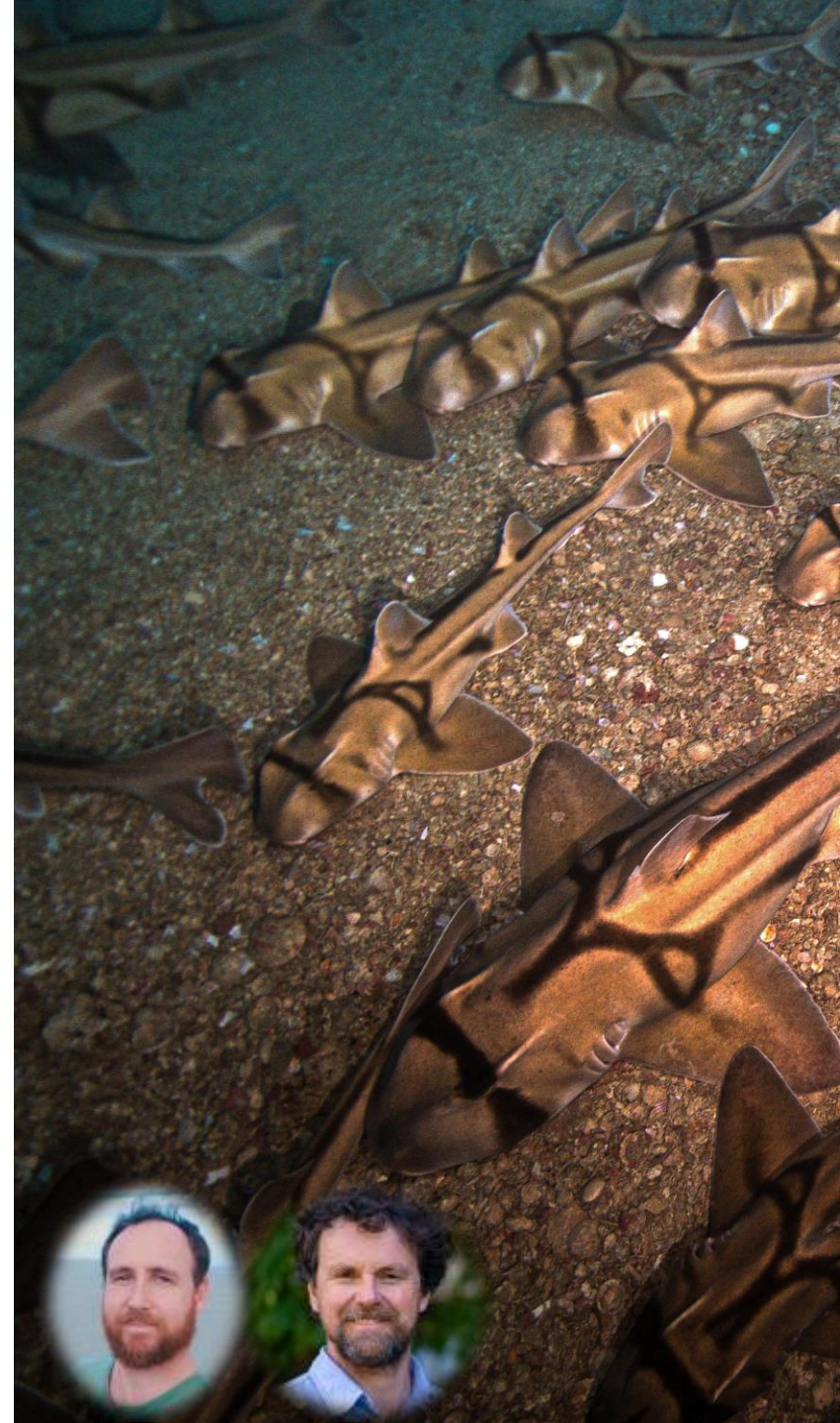
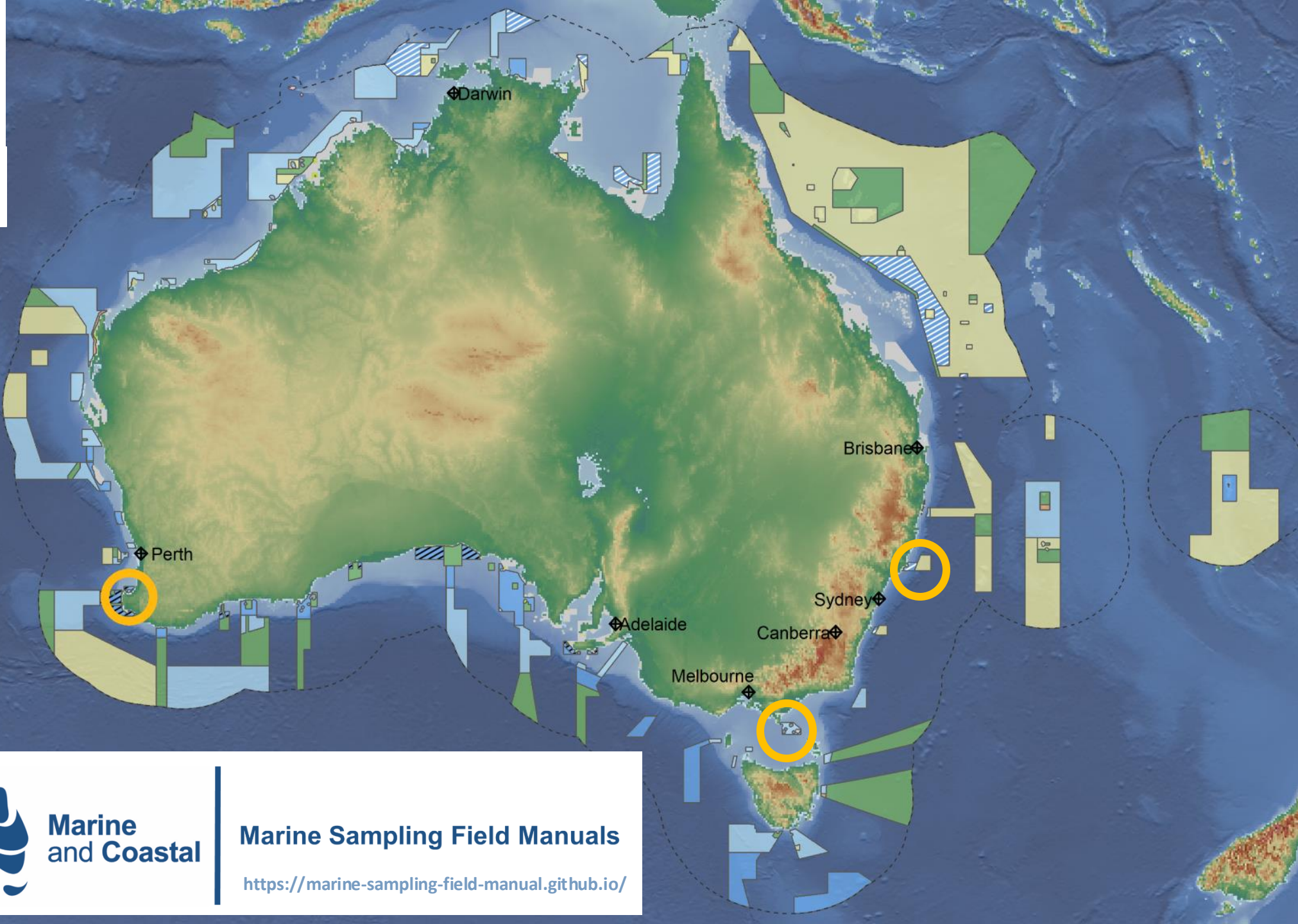


Assessing the condition of natural values within priority temperate Australian Marine Parks to evaluate management effectiveness

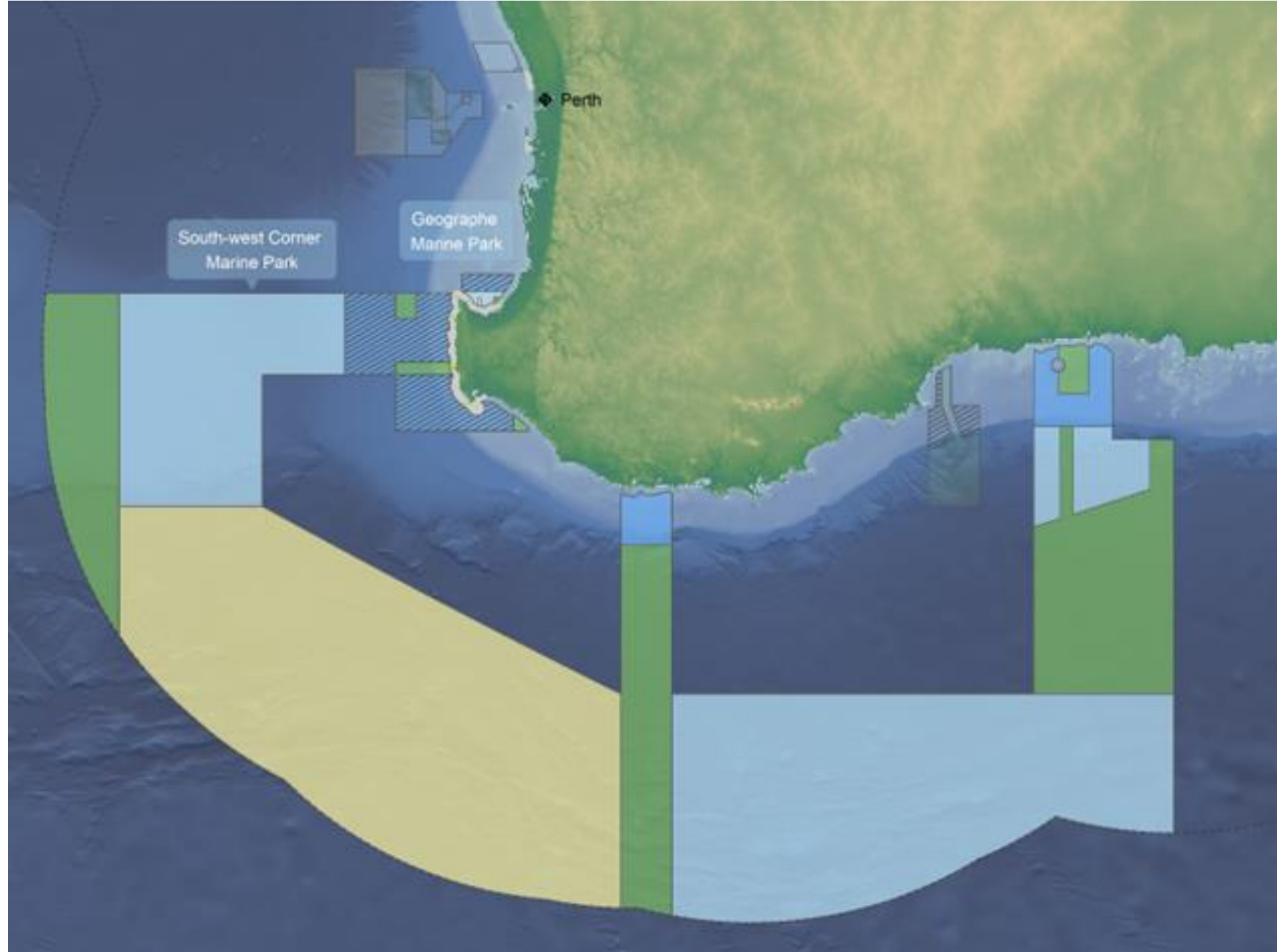
Project 4.21

Jacquomo Monk, Tim Langlois, Neville Barrett, Justin Hulls, Ashlee Bastiaansen, Anona Griffiths, Claude Spencer, Brooke Gibbons, Piers Dunstan, Skip Woolley, Scott Foster, David Harasti, Wayne Webb, Iszaac Webb, Steffan Howe, Dave Logan, Ben Sellers





Wadandi Country



Wadandi Country

Traditional Owner Guidance on:

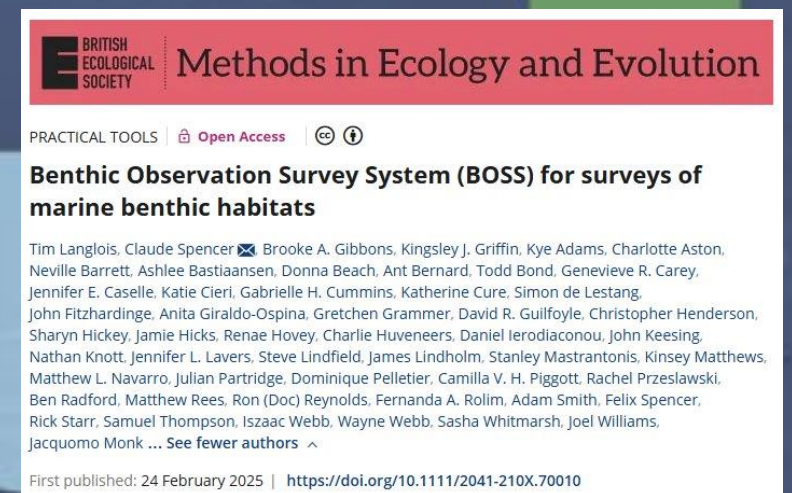
Cultural mapping
*NESP Marine
Biodiversity Hub*

Survey design across
Cultural Features

Cultural and Ranger
assistance on the water

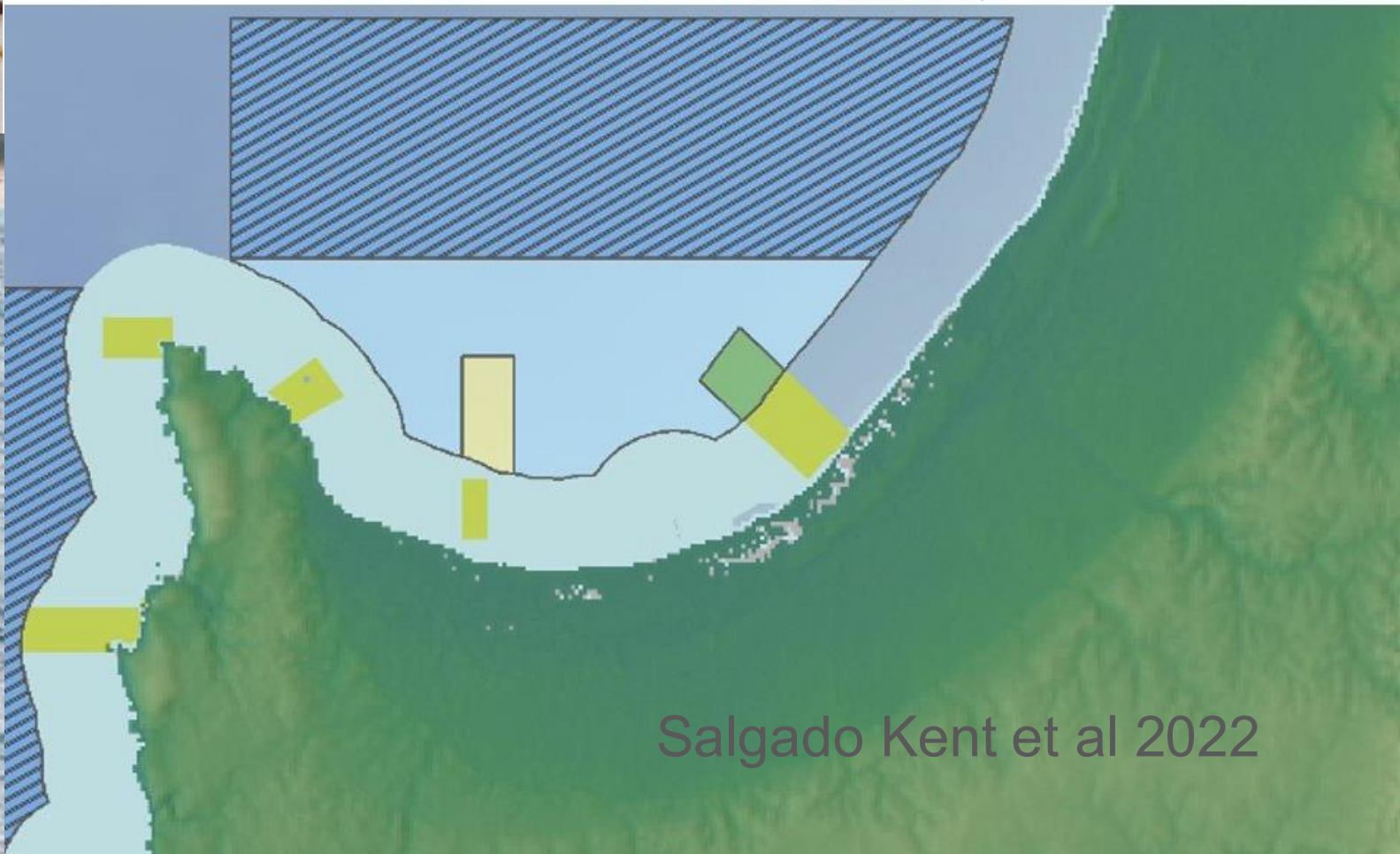
Co-design of field
manuals

Developing culturally
and historically
informed benchmarks





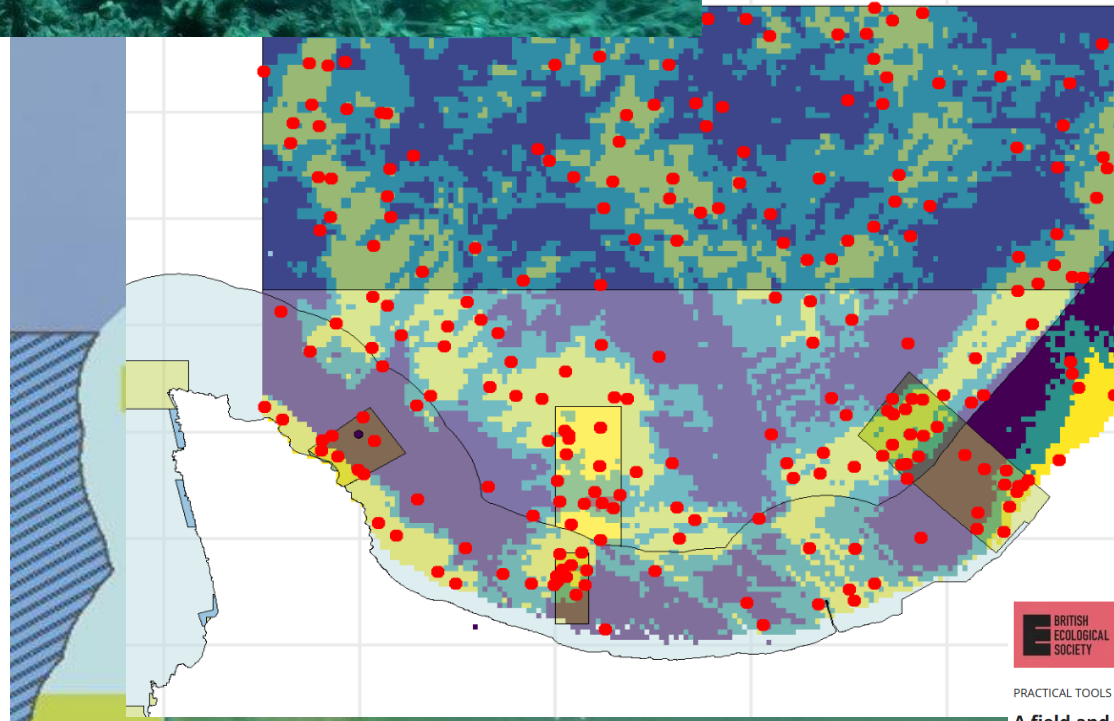
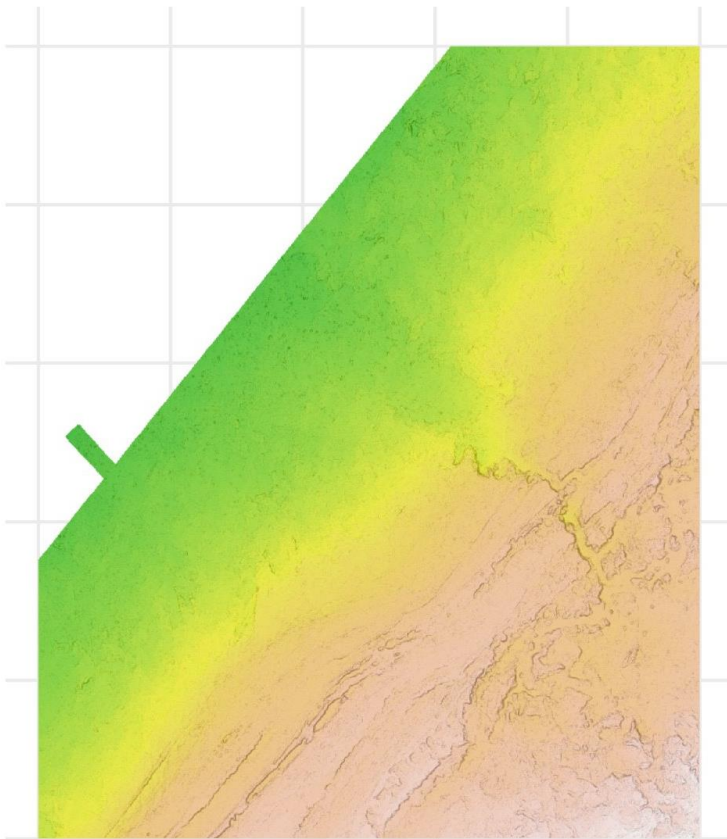
Geographe Marine Park



Salgado Kent et al 2022



Geographe Marine Park



 **Methods in Ecology and Evolution**

PRACTICAL TOOLS |  Open Access |  

A field and video annotation guide for baited remote underwater stereo-video surveys of demersal fish assemblages

Tim Langlois, Jordan Goetze , Todd Bond, Jacquomo Monk, Rene A. Abesamis, Jacob Asher, Neville Barrett, Anthony T. F. Bernard, Phil J. Bouchet, Matthew J. Birt, Mike Cappel, Leanne M. Curry-Randall, Damon Driessen, David V. Fairclough, Laura A. F. Fullwood, Brooke A. Gibbons, David Harasti, Michelle R. Heupel, Jamie Hicks, Thomas H. Holmes, Charlie Huveneers, Daniel Ierodiaconou, Alan Jordan, Nathan A. Knott, Steve Lindfield, Hamish A. Malcolm, Dianne McLean, Mark Meekan, David Miller, Peter J. Mitchell, Stephen J. Newman, Ben Radford, Fernanda A. Rolim, Benjamin J. Saunders, Marcus Stowar, Adam N. H. Smith, Michael J. Travers, Corey B. Wakefield, Sasha K. Whitmarsh, Joel Williams, Euan S. Harvey ... [See fewer authors](#) 

First published: 19 August 2020 | <https://doi.org/10.1111/2041-210X.13470> | Citations: 94

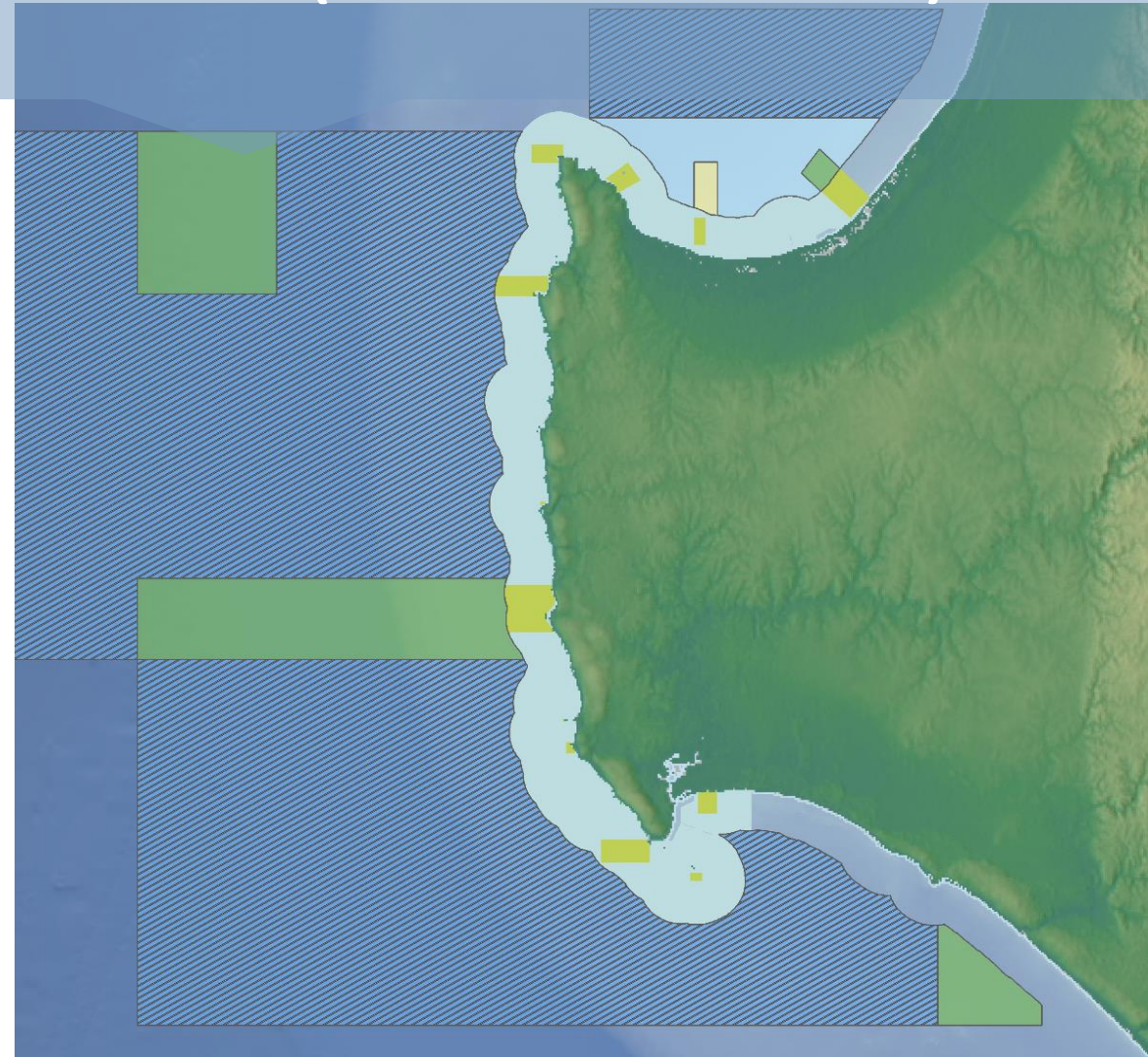


**Marine
and Coastal**

Marine Sampling Field Manuals



South-west Corner Marine Park (western arm)





South-west Corner Marine Park (western arm)



ECOLOGY
ECOLOGICAL SOCIETY OF AMERICA

THE SCIENTIFIC NATURALIST |  Open Access | 

Deep meadows: Deep-water seagrass habitats revealed

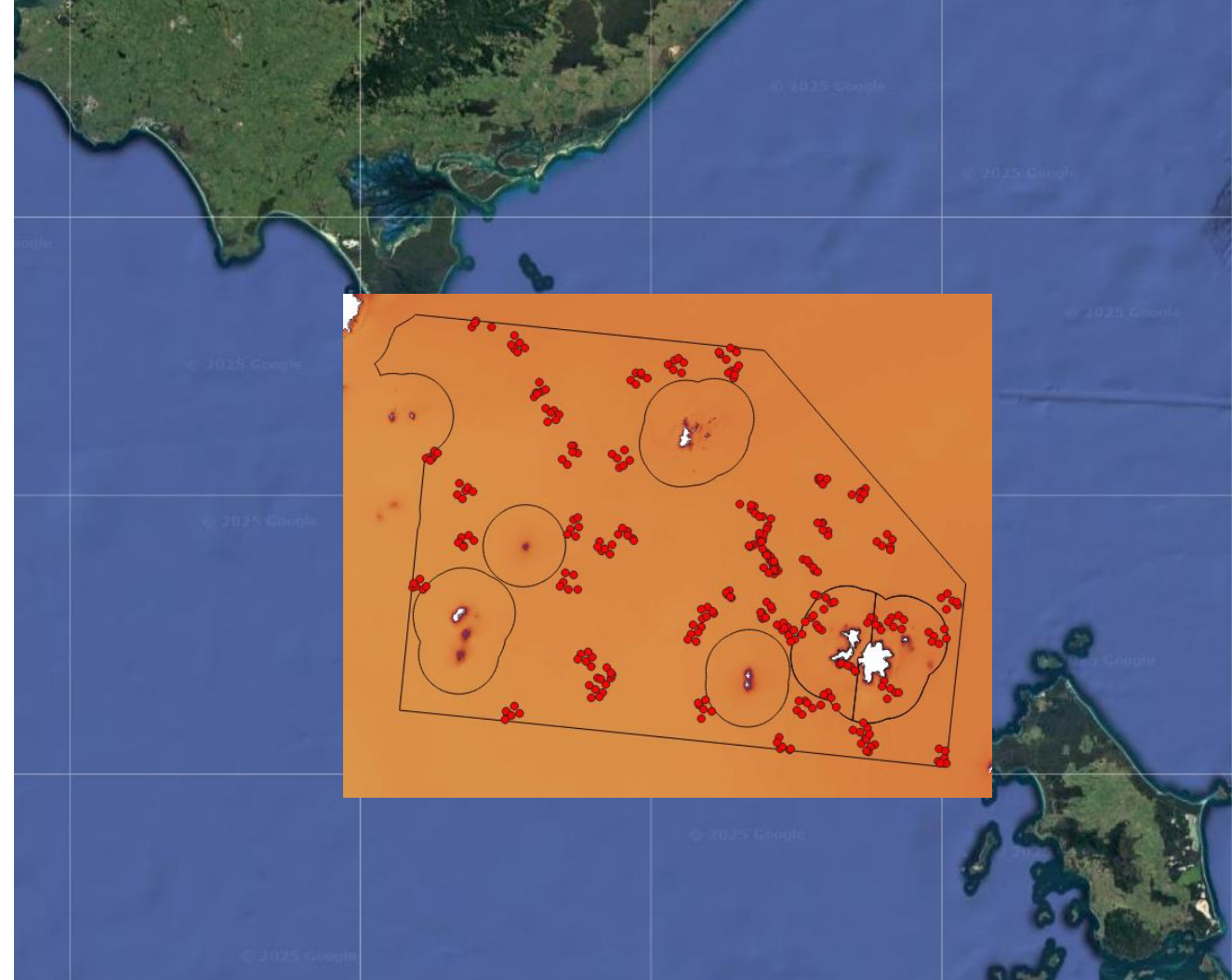
Belinda C. Martin  Ana Giraldo-Ospina, Sahira Bell, Marion Cambridge, Matthew W. Fraser, Brooke Gibbons, Euan S. Harvey, Gary A. Kendrick, Tim Langlois, Claude Spencer, Renae K. Hovey

First published: 31 July 2023 | <https://doi.org/10.1002/ecy.4150>





Beagle



SS Cambridge

Diverse sessile biota

Sawsharks and
school sharks

Beagle

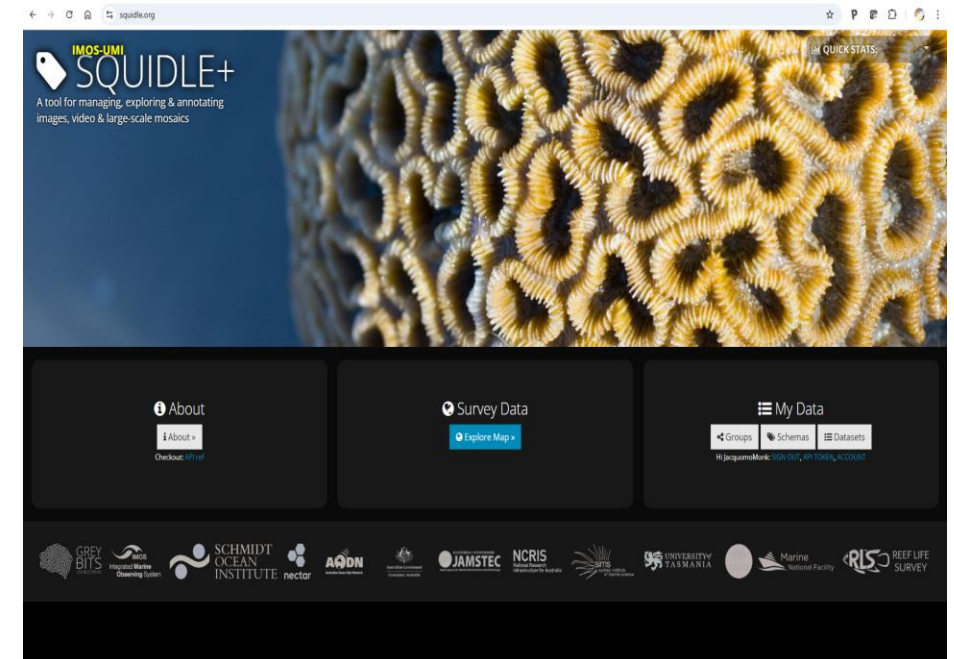
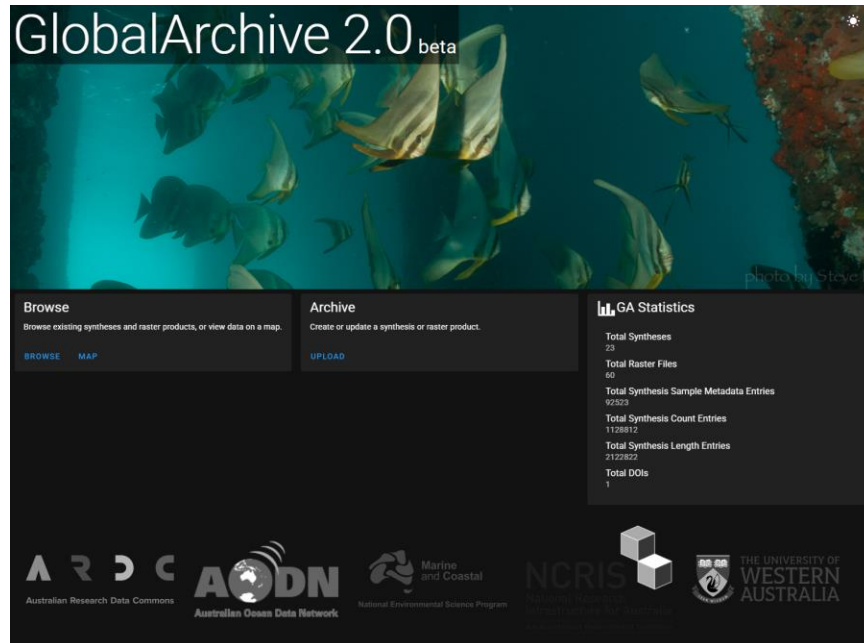
Potential emergence long spin
urchins (and barrens)

SBS ONDEMAND Home TV Shows Movies Live News Sport Favourites
Global Impact!!
Mysteries From Above
Documentary

Large aggregations
of Port Jackson
sharks (females)

Next steps...

- Hunter survey – May to Aug 2025
- Establishing data pipelines from GlobalArchive and SQUIDLE+ into Parks ME system (Project 4.20), Synthesis Reports (Project 5.6) and SoE (Project 5.9)

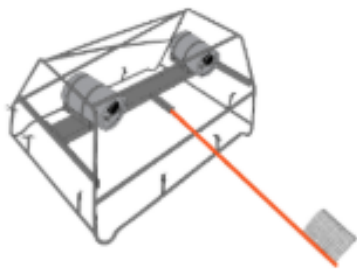


Demonstration of....

Findable, Accessible, Interoperable and Reusable

....data workflows for Demersal Fish

GlobalArchive 2.0



stereo-BRUVs



"Sand boxing" dashboards...

Investigate:

- ☐ Network/Bioregion
- ☒ Marine Park

Choose a Network/Bioregion:

- ☒ South-west
- ☐ North-west

Marine Park/Sentinel Area:

- ☒ Geographe Marine Park
- ☐ South-west Corner Marine Park (Western Arm)
- ☐ Abrolhos Marine Park

Geographe Marine Park

Ecosystem component:

Natural Values

Ecosystem sub-component:

Demersal fish

Demersal fish



Fish counted

42114



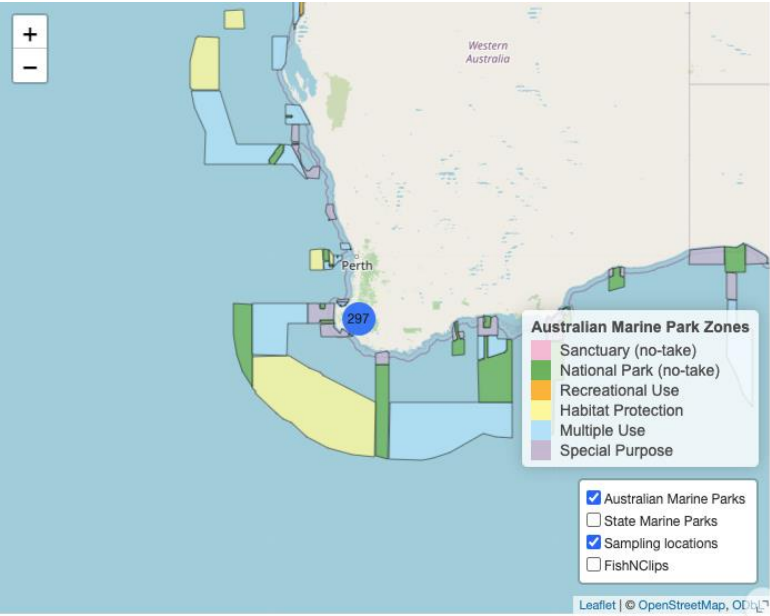
Fish species identified

194



Observations:

Status & Trends:

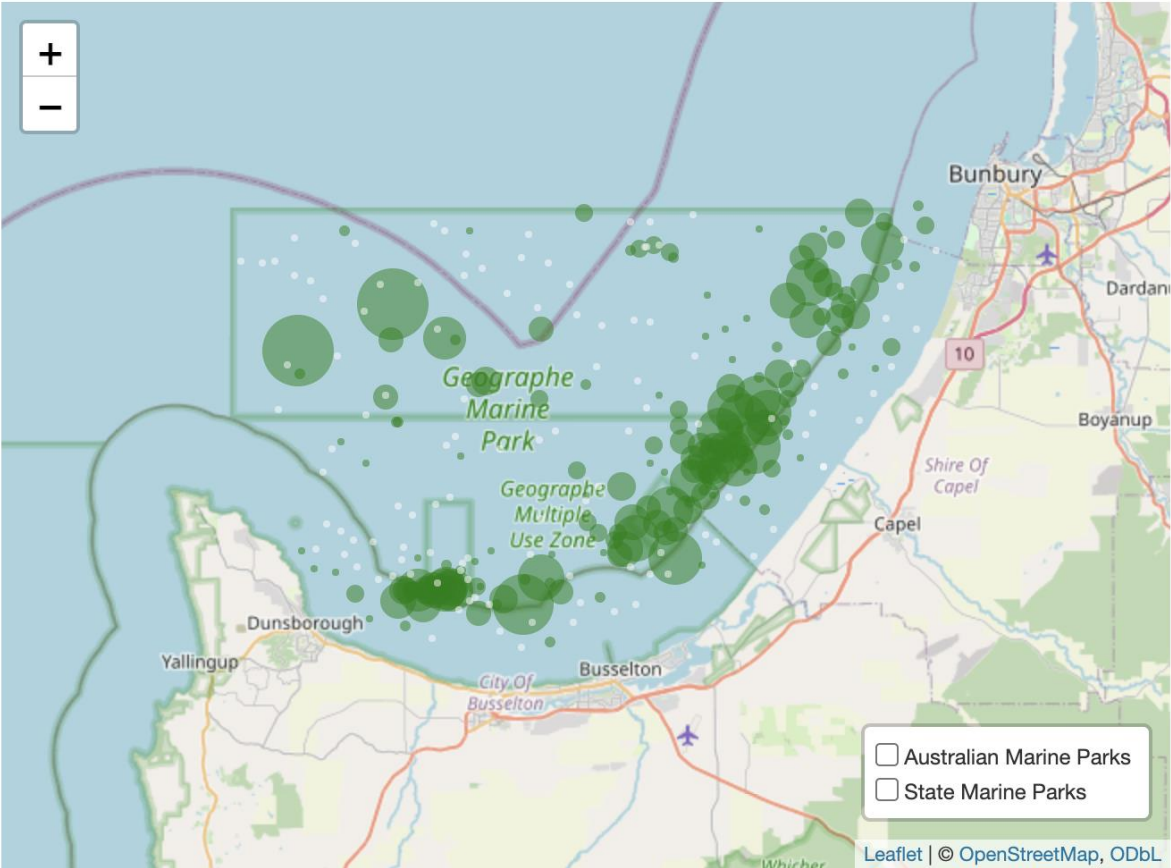


Investigate a species

Choose a species:

Ophthalmolepis lineolatus (Southern Maori Wrasse)

Choose a year:



FISHES OF AUSTRALIA

Home About Fishes Browse Classifications

CLASSIFICATION > ACTINOPTERYGII > PERCIFORMES > LABRIDAE > OPHTHALMOLEPIS > LINEOLATA

Summary More Info References Classification

Southern Maori Wrasse, *Ophthalmolepis lineolata* (Valenciennes 1839)

Other Names: Australian Maori-wrasse, Butcher's Prick, Maori, Maori Parrotfish, Maori Wrasse, Rainbow-fish

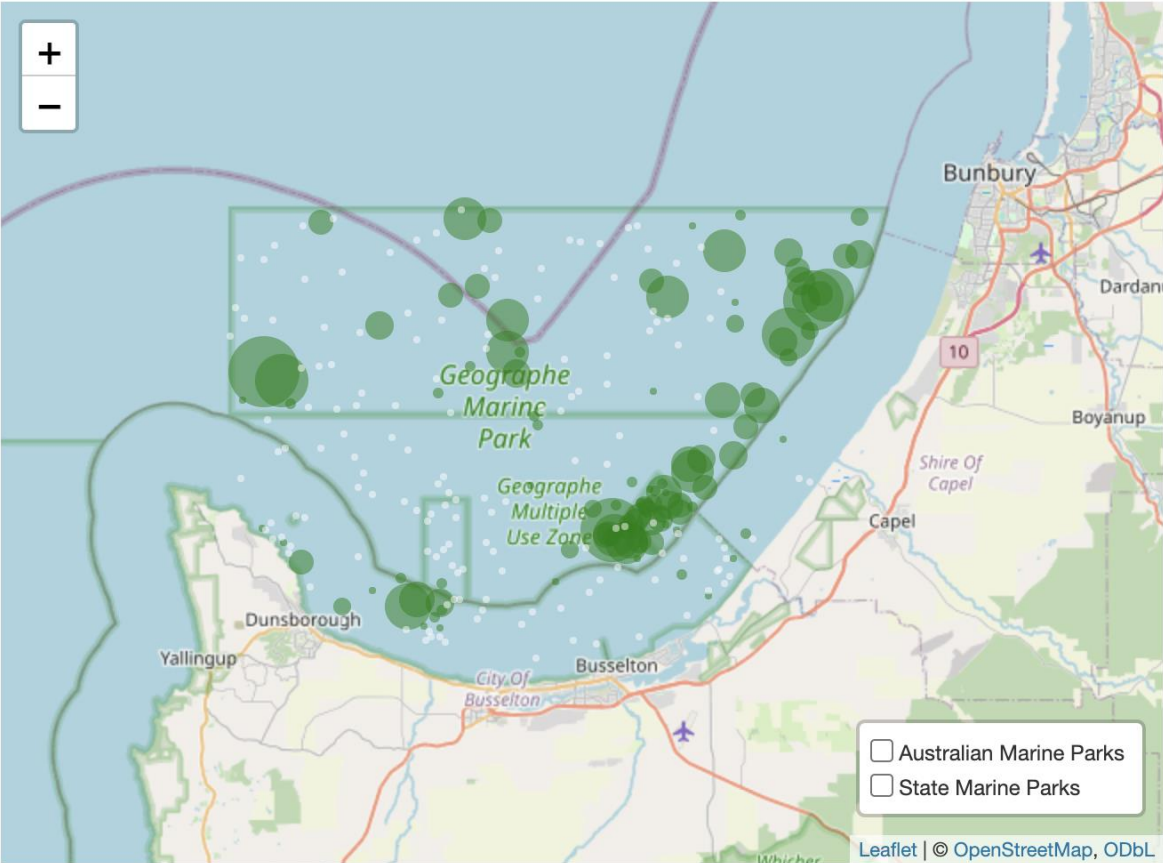


Choose a species:

Ophthalmolepis lineolatus (Southern Maori Wrasse)



Choose a year:



FISHES OF AUSTRALIA

[Home](#) [About Fishes](#) [Browse Classification](#)

CLASSIFICATION > ACTINOPTERYGII > PERCIFORMES > LABRIDAE > OPTHALMOLEPIS > LINEOLATA

Summary

More Info

References

Classification

Southern Maori Wrasse, *Ophthalmolepis lineolata* (Valenciennes 1839)

Other Names: Australian Maori-wrasse, Butcher's Prick, Maori, Maori Parrotfish, Maori Wrasse, Rainbow-fish



Investigate a species

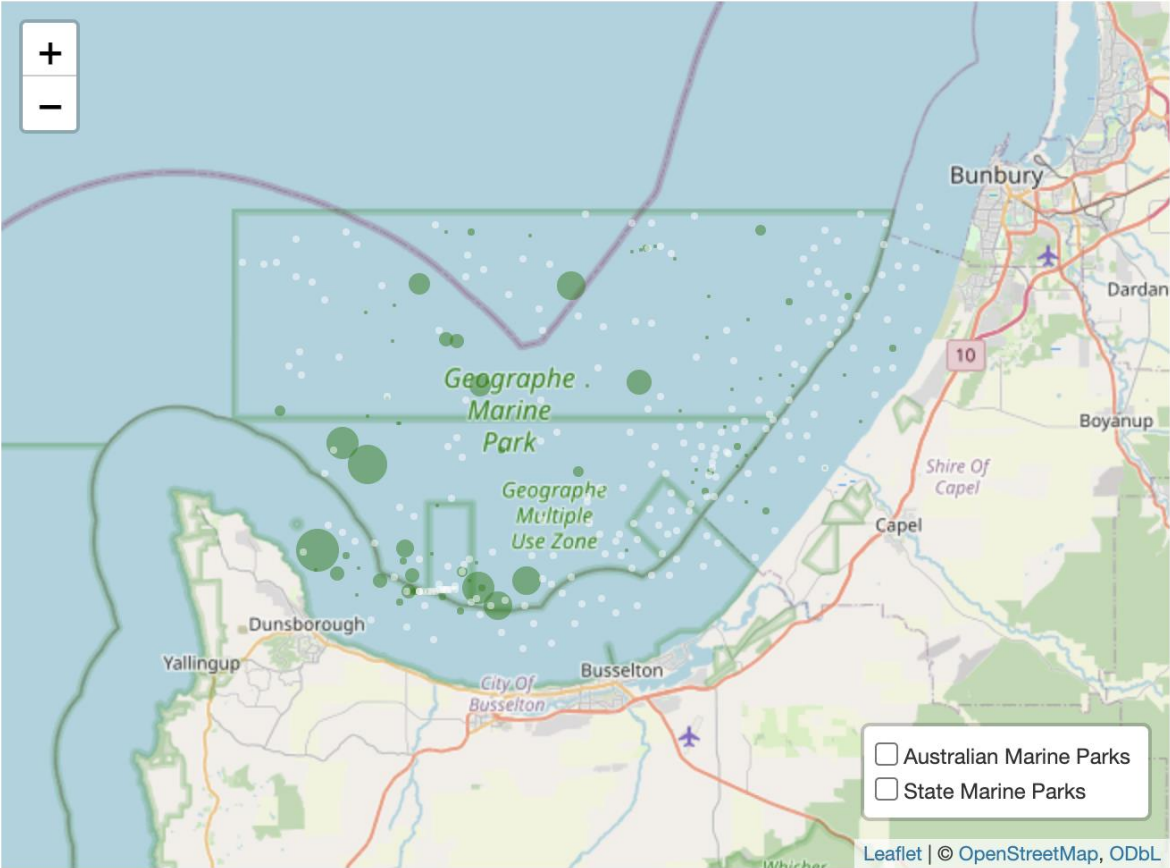
Choose a species:

Chrysophrys auratus (Snapper)

Choose a year:

2014

2024



FISHES OF AUSTRALIA

Home About Fishes Browse Classific

CLASSIFICATION > ACTINOPTERYGII > PERCIFORMES > SPARIDAE > CHRYSOPHRYS > AURATUS

Summary More Info References Classification

Snapper, *Chrysophrys auratus* (Forster 1801)

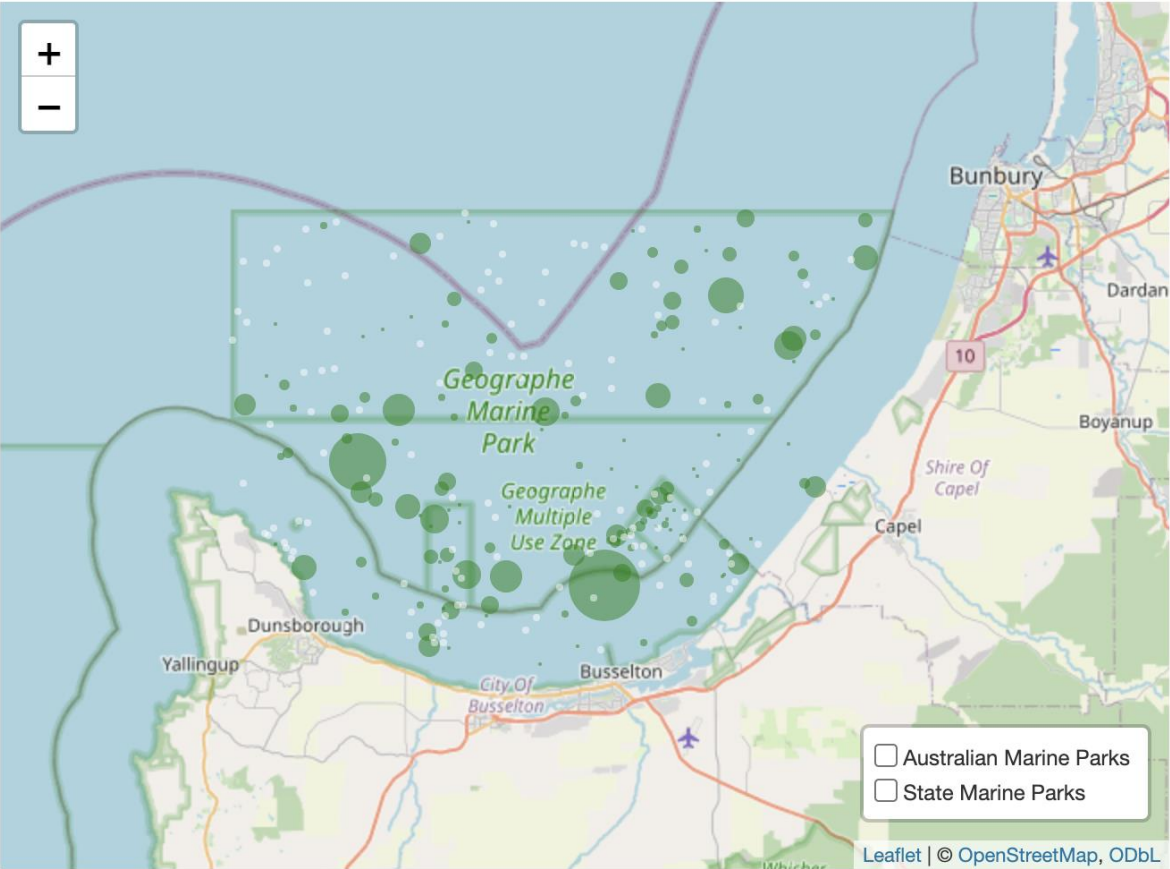
Other Names: Australasian Snapper, Cockney, Cockney Bream, Eastern Snapper, Nobblers, Old Man Red Snapper, Old Man Snapper, Pink Snapper, Pinkie, Pinkies, Queen, Red Bream, Reddie, Ruggers, Schnapper, Silver Seabream, Squire, Tamure, Western Snapper, White Snapper



Choose a species:

Chrysophrys auratus (Snapper)

Choose a year:



FISHES OF AUSTRALIA

Home About Fishes Browse Classification

CLASSIFICATION > ACTINOPTERYGII > PERCIFORMES > SPARIDAE > CHRYSOPHRYS > AURATUS

Summary More Info References Classification

Snapper, *Chrysophrys auratus* (Forster 1801)

Other Names: Australasian Snapper, Cockney, Cockney Bream, Eastern Snapper, Nobbles, Old Man Red Snapper, Old Man Snapper, Pink Snapper, Pinkie, Pinkies, Queen, Red Bream, Reddie, Ruggers, Schnapper, Silver Seabream, Squire, Tamure, Western Snapper, White Snapper





National Environmental Science Program

Thank you

Contact: Jac Monk: jacquomo.monk@utas.edu.au

Tim Langlois: tim.langlois@uwa.edu.au



Department of
Primary Industries



www.nespmarinecoastal.edu.au

