



National Environmental Science Program

NESP Marine and Coastal Hub

www.nespmarinecoastal.edu.au

Damien Burrows – JCU, Townsville

Alan Jordan – UTas, Hobart



National Environmental Science Program (NESP)

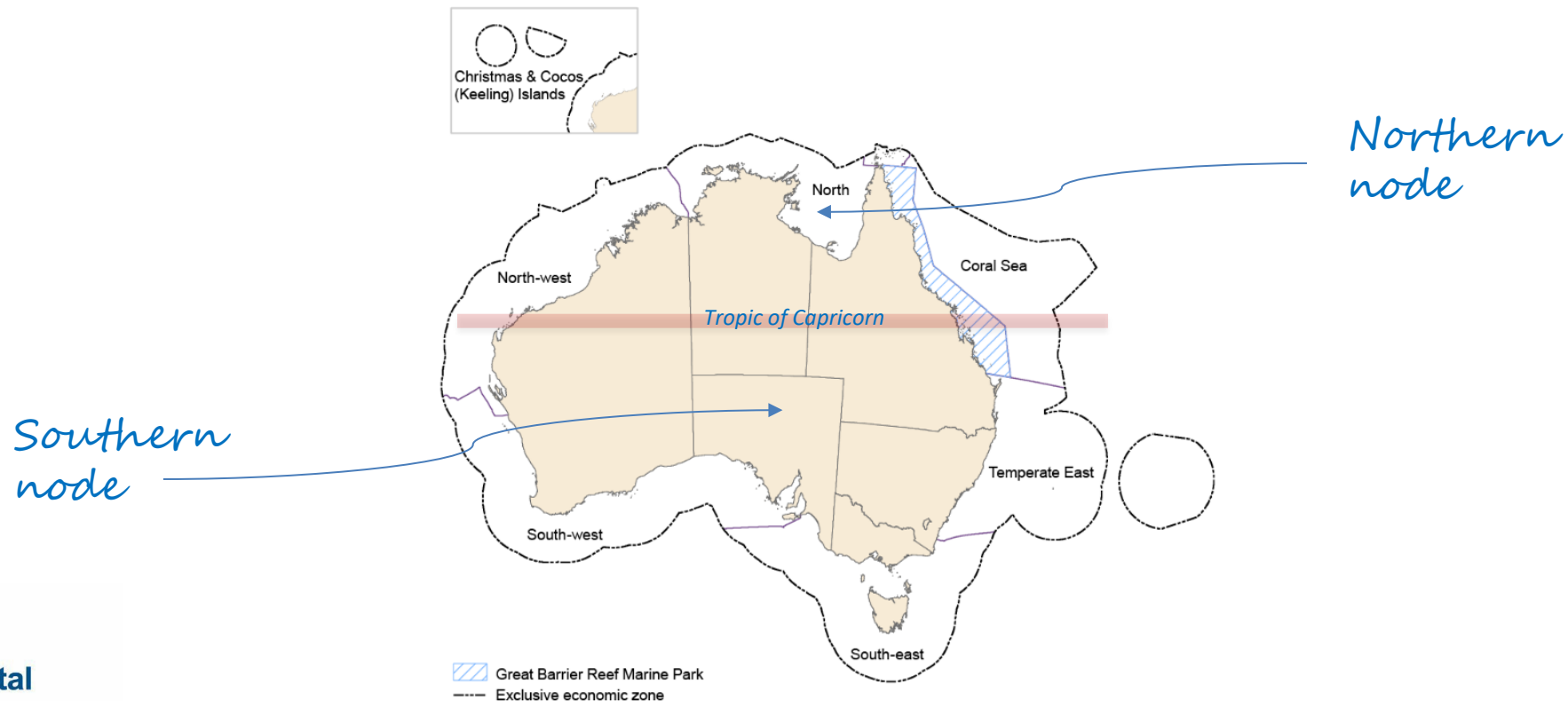
- NESP is a long-term Commonwealth Government investment in Australia's environmental research capacity
- NESP phase 2 continues from previous programs CERF (2006-2010), NERP (2011-2015) and NESP first phase (2015-2021)
- Current NESP (2021-2027) is investing \$149 million into 4 research hubs
- NESP Marine and Coastal Hub is a collaboration across 30 research partners to deliver practical outcomes for Australia's marine and coastal environment and communities

The program is intended to:

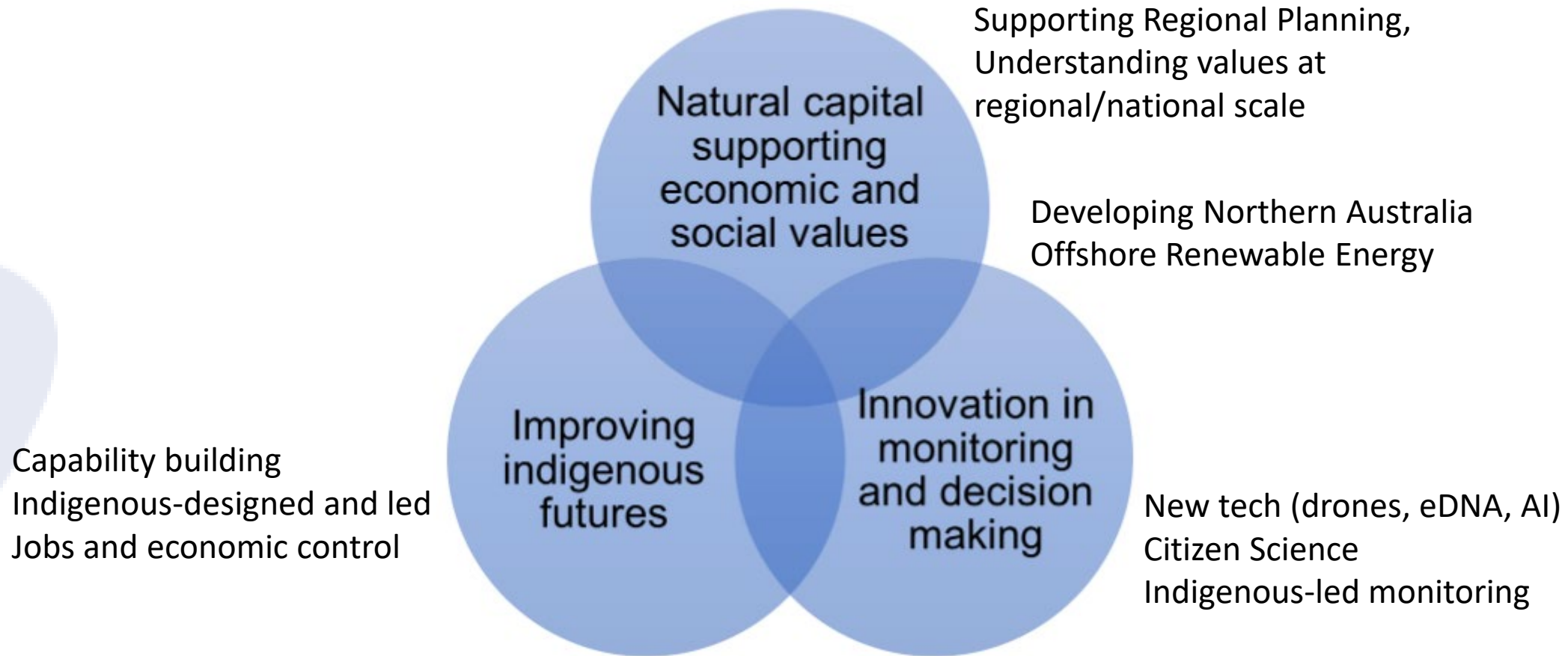
- Fund highly applied research that enables evidence-based policy and better management decisions for the future
- Be co-designed and co-delivered with key stakeholders. The process starts with evaluating the needs of key research users
- Builds enduring research partnerships that outlive the program

NESP Marine and Coastal Hub is co-delivered by north and south nodes

- Northern node – administered by Reef and Rainforest Research Centre (RRRC)
- Southern node – administered by University of Tasmania (UTAS)

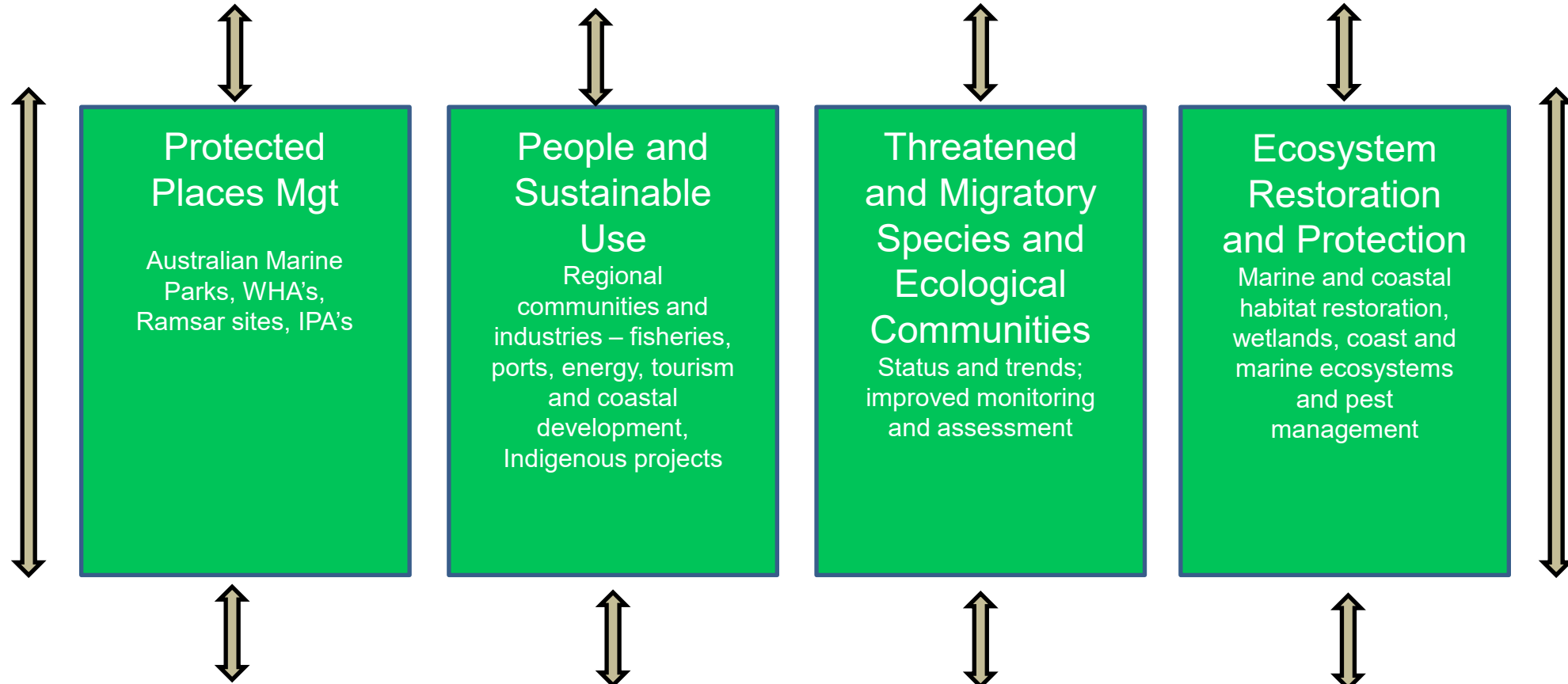


Marine and Coastal Hub Key Outcome Areas



Informing Policy and Decision Making

Decision-making, assessment, real-time information, de-risking coastal and marine development



Knowledge Systems

Monitoring, technology, indicators, valuing knowledge systems – Traditional ecological knowledge, citizen science, industry knowledge, data mining and wrangling

NESP Marine and Coastal Hub – web access

People and sustainable use

[Show overview](#) ▾



Offshore wind
energy



Research for
regional planning



Monitoring and best
practice



Human values



Coastal water
quality



Ecosystem restoration and protection

[Show overview](#) ▾



Blue carbon



Environmental
restoration



Protecting natural
values



Protected places

[Show overview](#) ▾

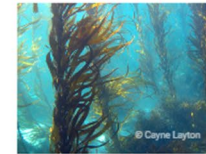


Protected place
management



Threatened and migratory species and ecological communities

[Show overview](#) ▾



Ecological
communities



Sharks, rays and fish



Mammals, reptiles
and birds



Indigenous knowledge and partnerships

[Show overview](#) ▾



Indigenous
leadership and
knowledge



Culturally important
places



Coastal restoration
and protection



Culturally important
species

